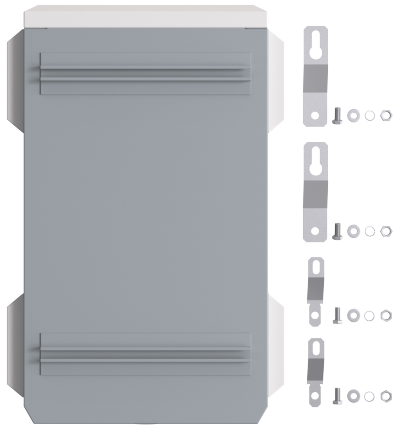


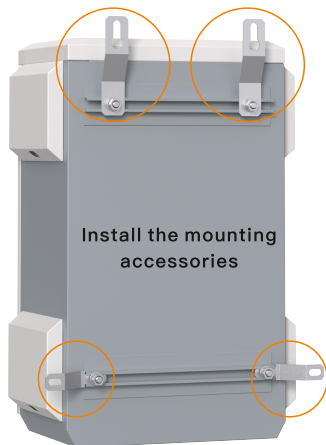
Quick Installation Guide

Wall Mounting

- 1 Prepare the mounting accessories.



- 2 Attach each of the 4 wall hanging accessories to the track on the back of the box with screws.

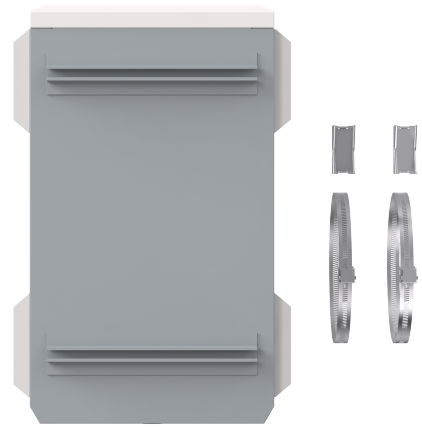


- 3 Drill holes in the marked position on the wall. Then put the expansion screws into the wall and fixed the box using the screws.



Pole Mounting

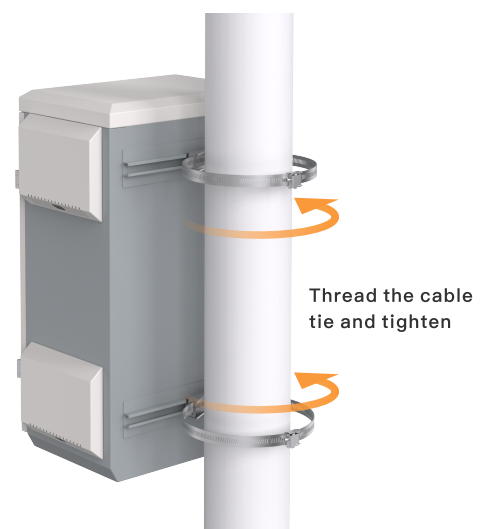
- 1 Prepare the mounting accessories.



- 2 Install the clips in the hoop fitting into the track.



- 3 Thread the cable tie into the hole in the clips, and finally adjust the cable tie according to the size of the pole.

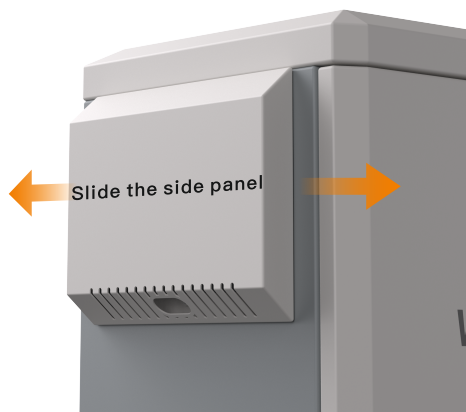


Remove Side Panel

- 1 Remove the screws holding the side panels on the inside of the Box.



- 2 Slide the board on the side of the box left and right to remove the board.

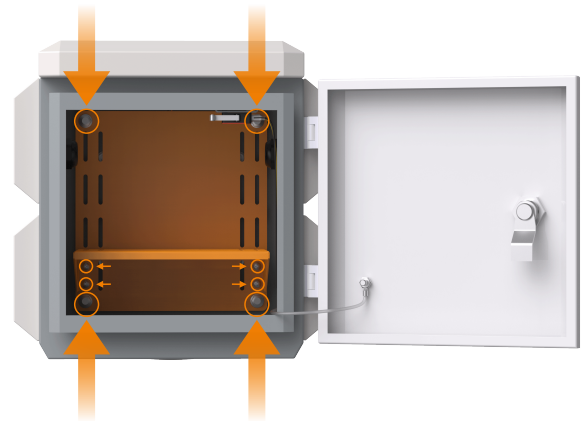


- 3 Insert the cable through the waterproof connector.

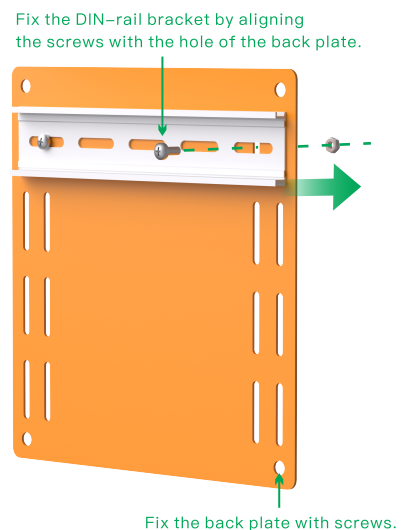


Din-Rail Installation

- 1 Remove the screws on the back plate of the box.



- 2 Place the nuts behind the holes and grooves of the back plate, then put the DIN-rail bracket on the surface of the back plate and fix the DIN-rail bracket by aligning the screws with the hole of the back plate. After the installation of the DIN-rail is completed, the back plate will be fixed with screws.



Technical Support



Company Website



Cloud Management

Wireless-Tek Technology Limited

Address: Building 3, Units 1801-1807, 1812, Huaqiang Era Plaza, Tangwei Community, Fuhai Street, Bao'an District, Shenzhen City, Guangdong Province, China.

Website: www.wireless-tek.com

Tel: 86-0755-32811290

Email: sales@wireless-tek.com

Technical Support: tech@wireless-tek.com

